

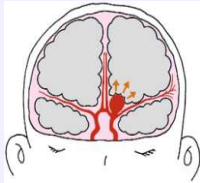
Medical Question for MRI

Date year month day

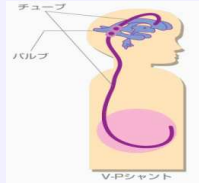
Name _____ (Age) Sex M • F Weight kg

Have you ever had an MRI scan? (Yes • No)

Please check the appropriate boxes.



brain aneurysm clip



ventricular shunt



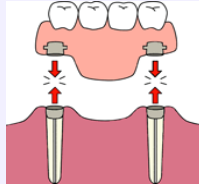
artificial ear

hearing aid

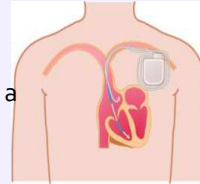


artificial eye

colored contact lens



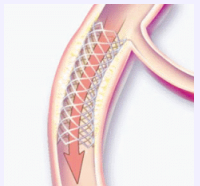
denture fixed with a magnet



pacemaker

artificial cardiac valve (Star-Edward type)

Swan-Ganz catheter

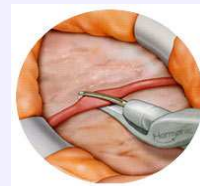


coronary artery stent



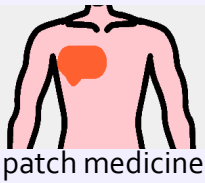
neurotransmitter device

stimulation device



carotid clamp (Poppen-Blaylock type)

If any of the above conditions apply to you, please be sure to tell staff.



patch medicine

Nitroderm TTS

Hokunalin

fomentation



makeup

sunscreen

manicure nail



cosmetic tattoos

tattoos

Please remove them before the examination, because these may cause burns.



possibility of pregnancy



claustrophobic

Have you ever had surgery to have any kind of metal?

(Yes • No) around age: _____.

The machine of MRI uses a strong magnetic field, so you must remove all metal items.

(watch, key, credit card, denture, pocket warmer, artificial arm or leg, cell-phone, hair pin, jewelries)

If you wear contact lenses, you need to remove it before entering the scan room.

Please prepare preservation solution or spares.

(for women) Some cosmetic products contain metals.

You need to take your makeup off, so please prepare cleansing products.

If you have any questions, please ask the technician in charge of the MRI scan.